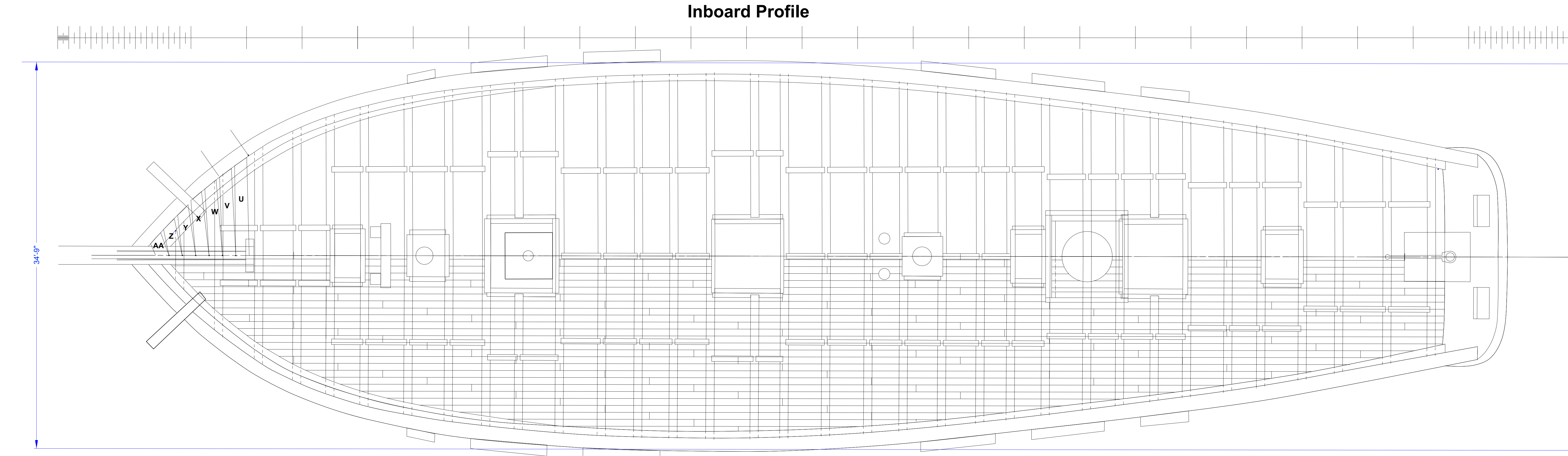
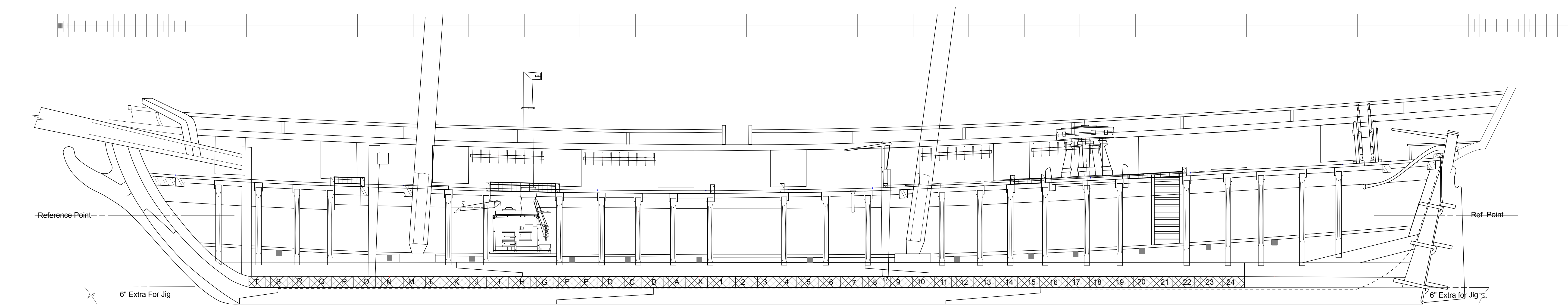
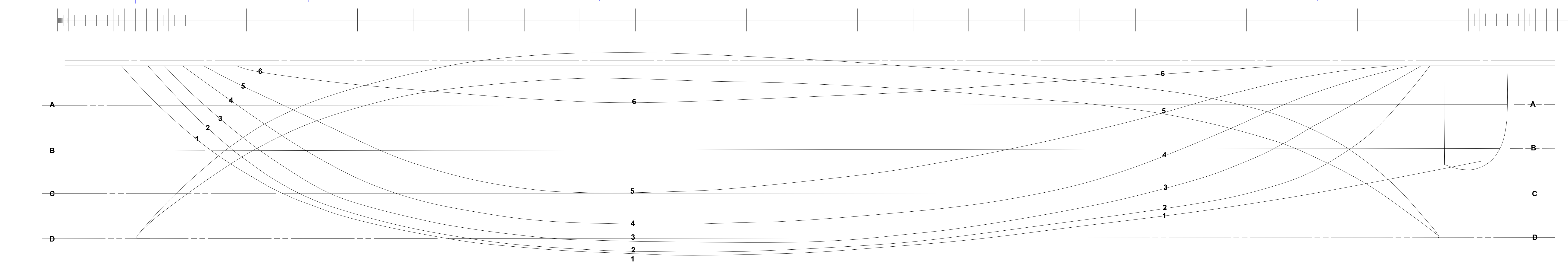
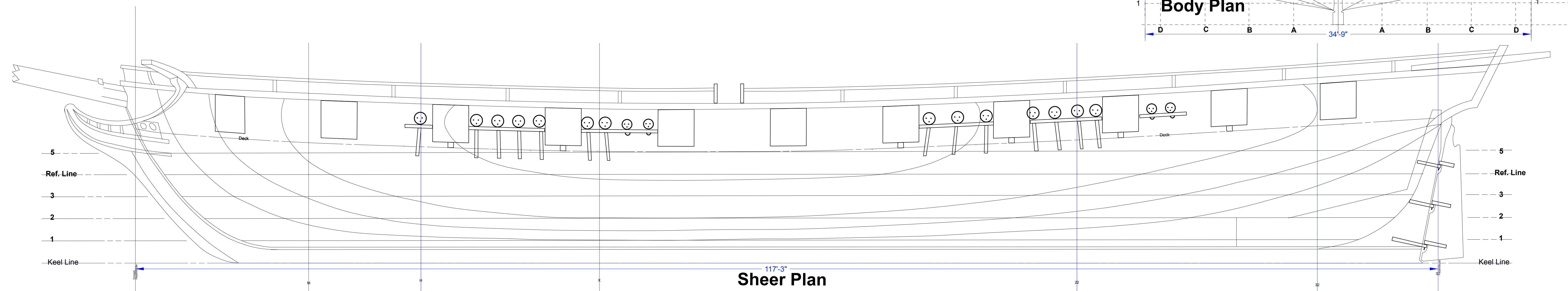
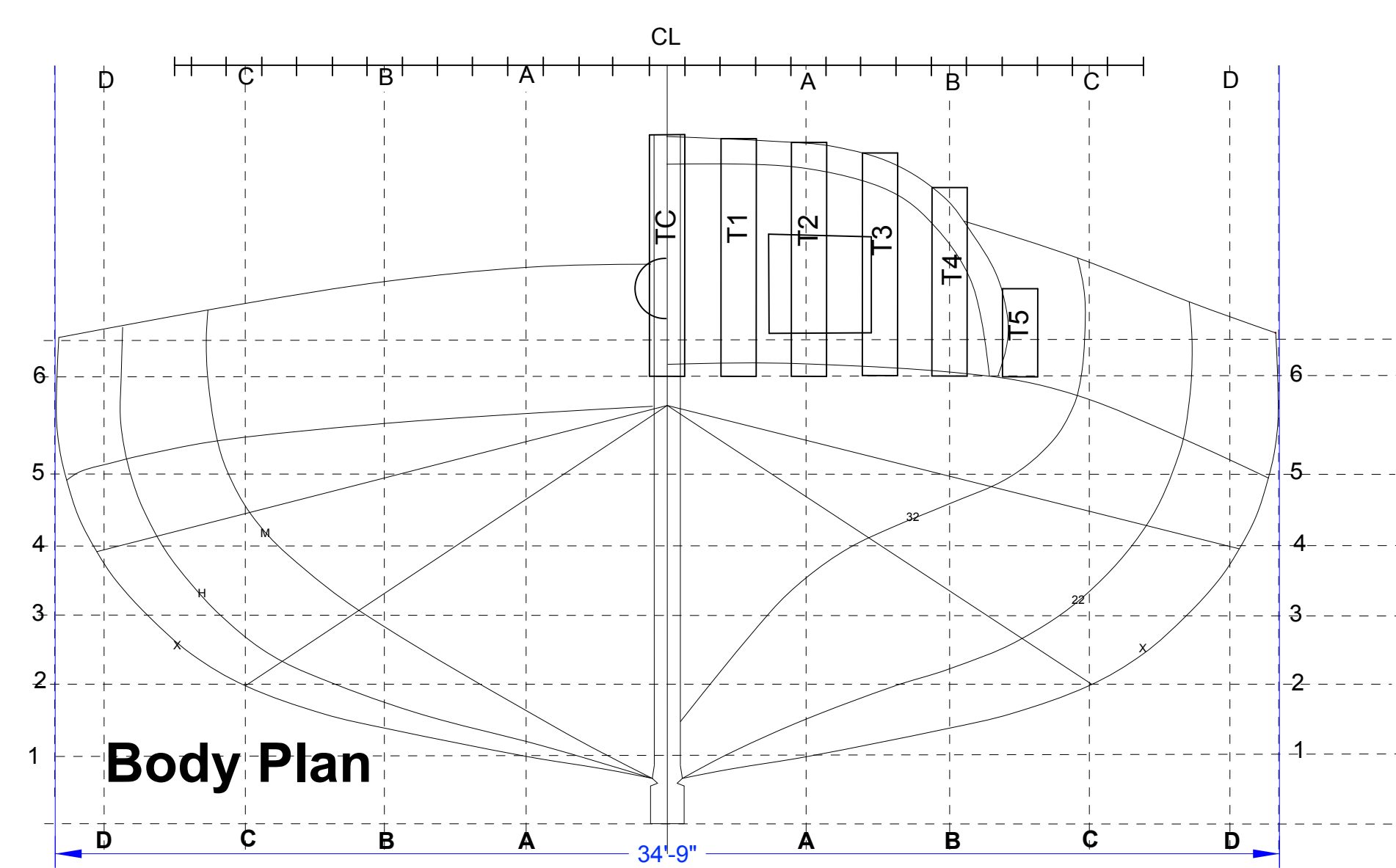


The U.S. Navy Brig
EAGLE
Built at Vergennes, Vermont
Between July 23 and August 11, 1814
for service on Lake Champlain
Adam Brown, Shipwright
Scale 1:48 (1/4" = 1')

Length between perpendiculars
117 feet, 3" (35.74 meters)

Moulded Beam
34 feet, 9 inches (10.59 meters)

Based on the Plans and Masters Thesis
by Professor Kevin Chrisman
Texas A & M University



Deck Plan

The U.S. Navy Brig **EAGLE**

Built at Vergennes, Vermont
Between July 23 and August 11, 1814
for service on Lake Champlain
Adam Brown, Shipwright
Scale 1:48 (1/4" = 1')

Length between perpendiculars
117 feet, 3" (35.74 meters)

Moulded Beam
34 feet, 9 inches (10.59 meters)

Based on the Plans and Masters Thesis
by Professor Kevin Chrisman
Texas A & M University

