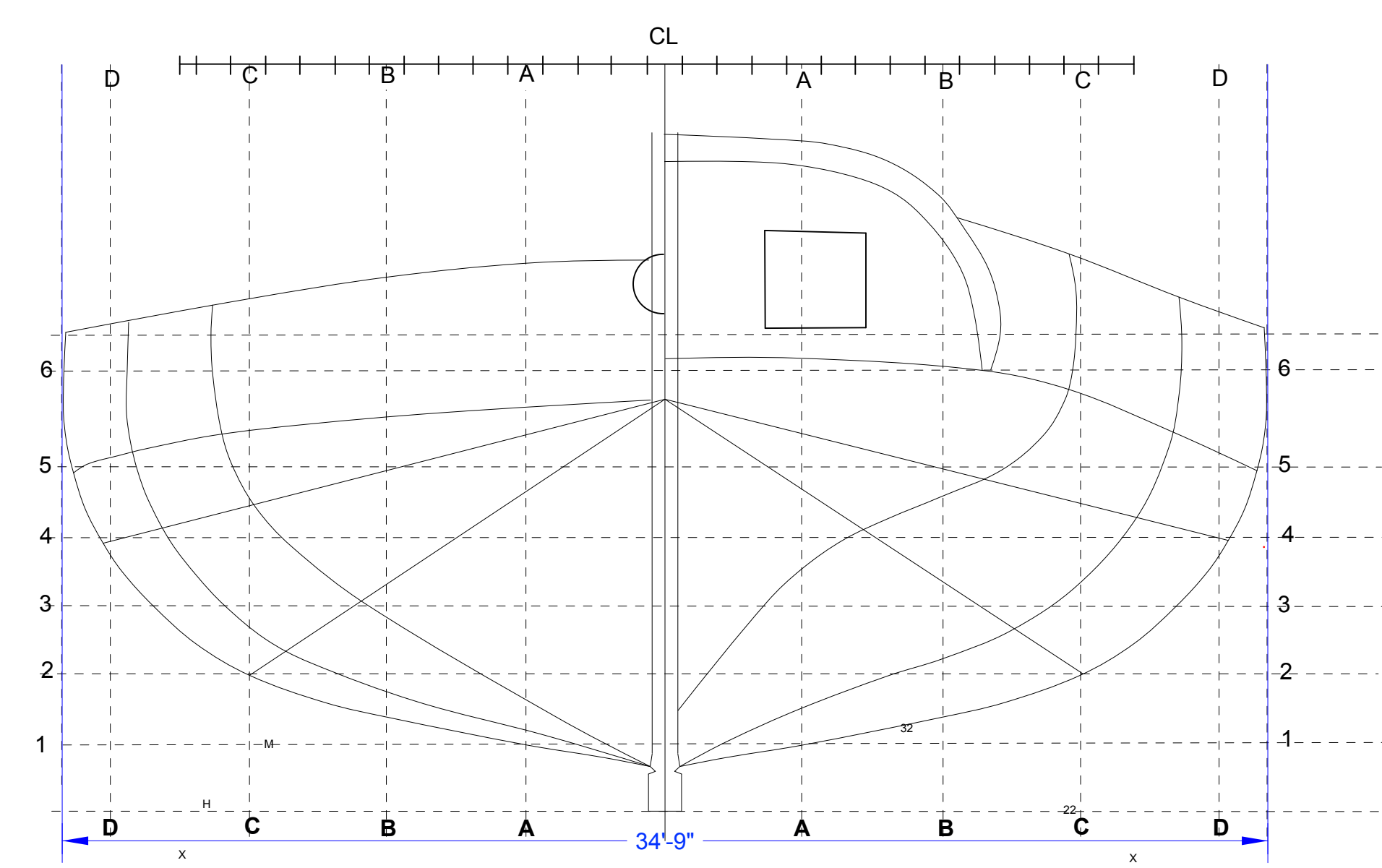


The U.S. Navy Brig  
**EAGLE**  
 Built at Vergennes, Vermont  
 Between July 23 and August 11, 1814  
 for service on Lake Champlain  
 Adam Brown, Shipwright  
 Scale 1:48 (1/4" = 1')

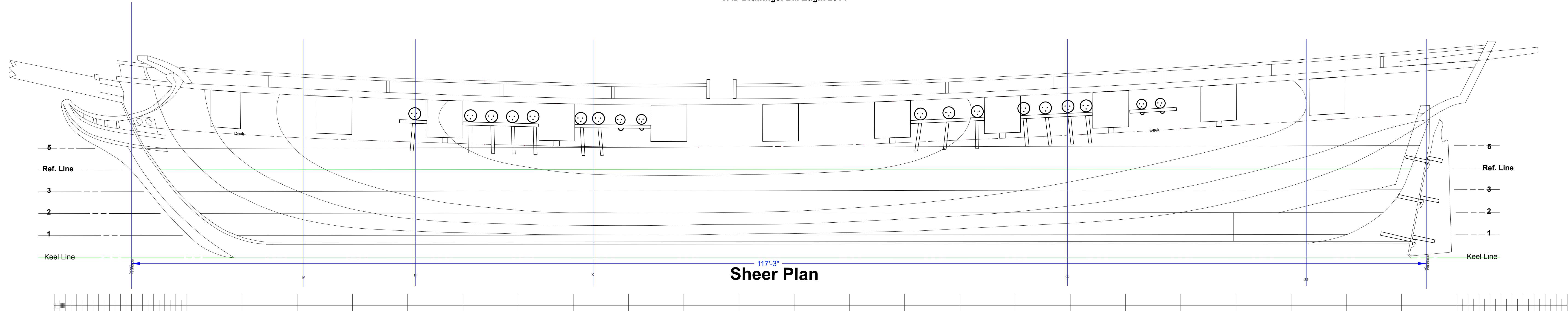
Length between perpendiculars  
 117 feet, 3" (35.74 meters)

Moulded Beam  
 34 feet, 9 inches (10.59 meters)

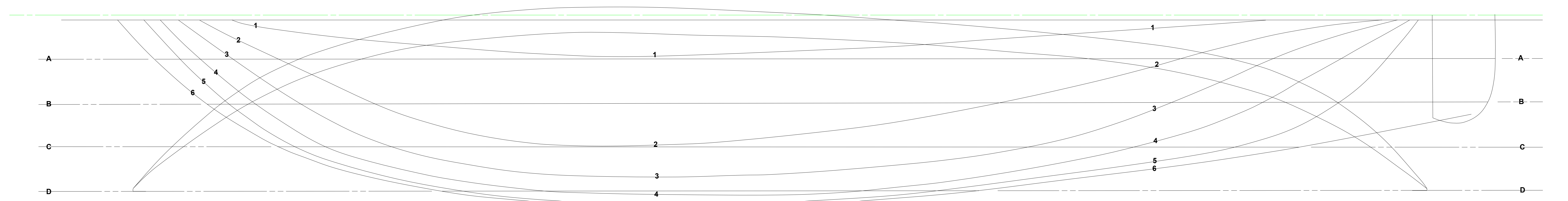
Based on the Plans and Masters Thesis  
 by Professor Kevin Chrisman  
 Texas A & M University  
 CAD Drawings: Bill Edgin 2014



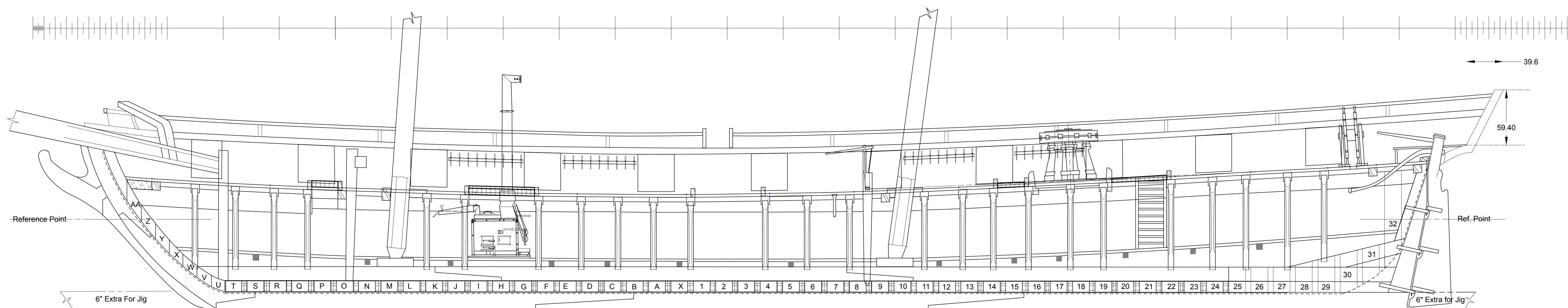
Body Plan



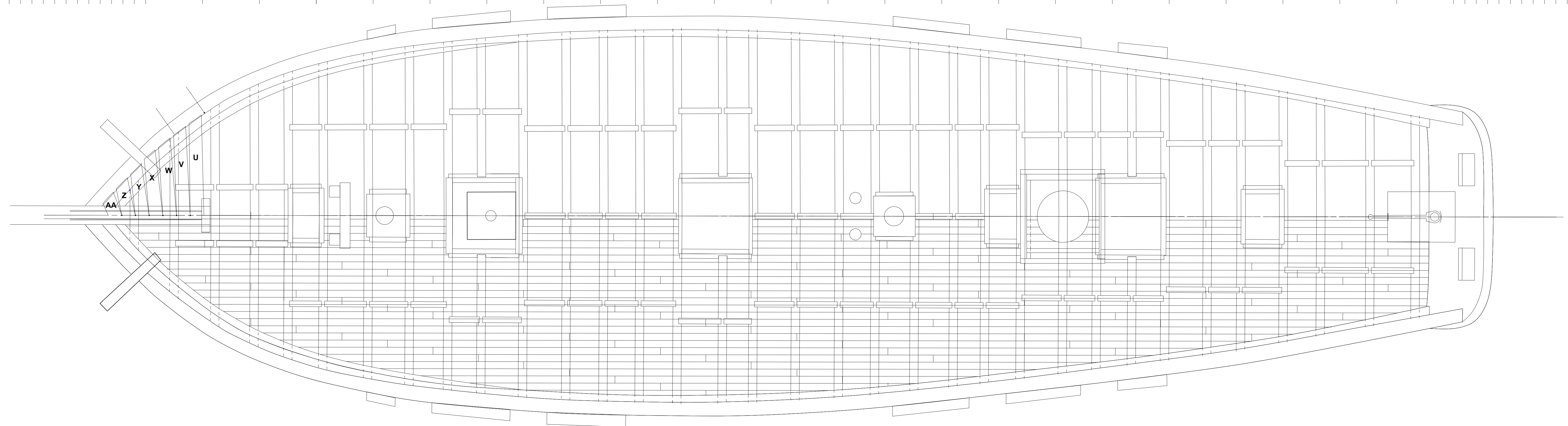
Sheer Plan



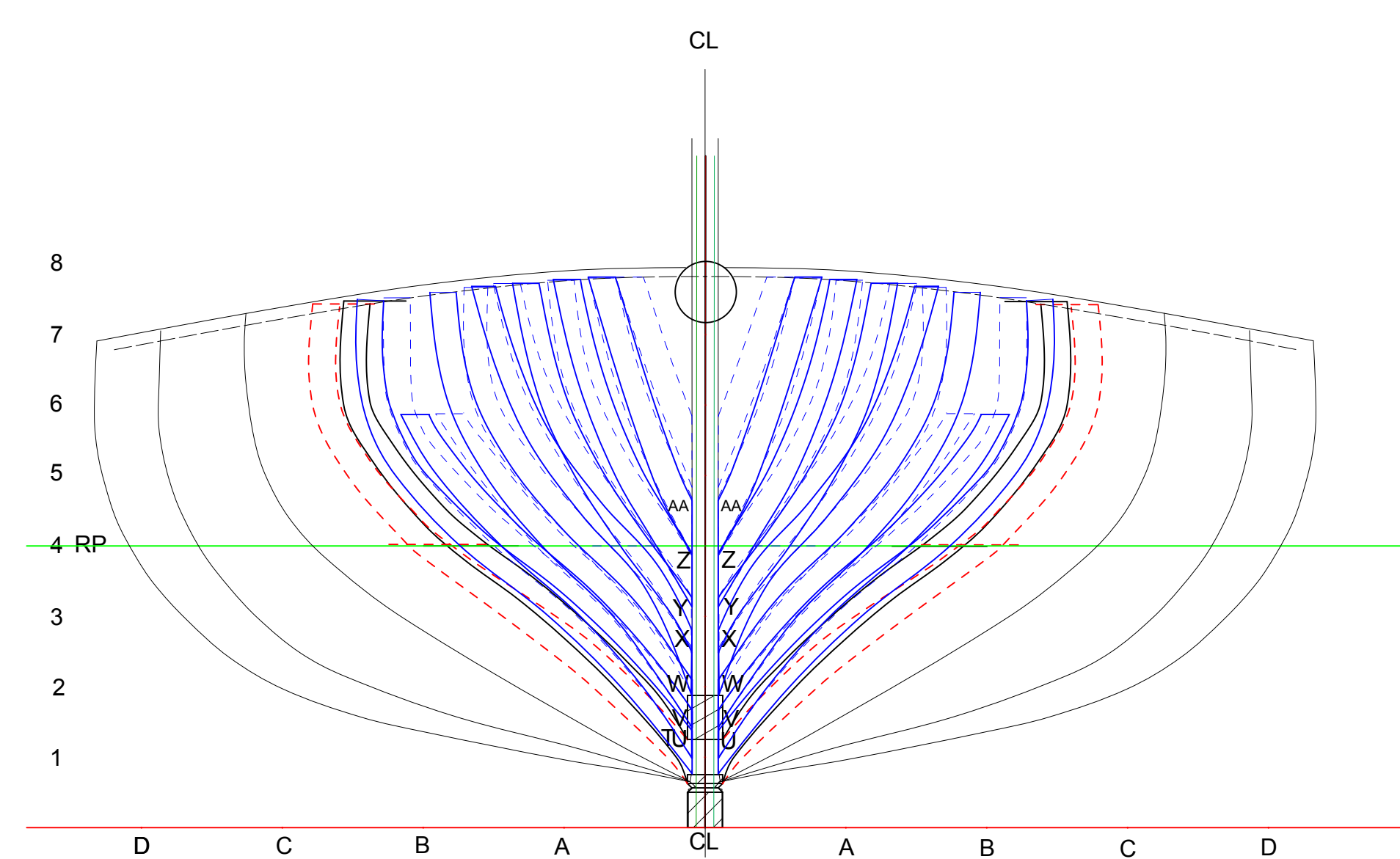
Half Breadth Plan



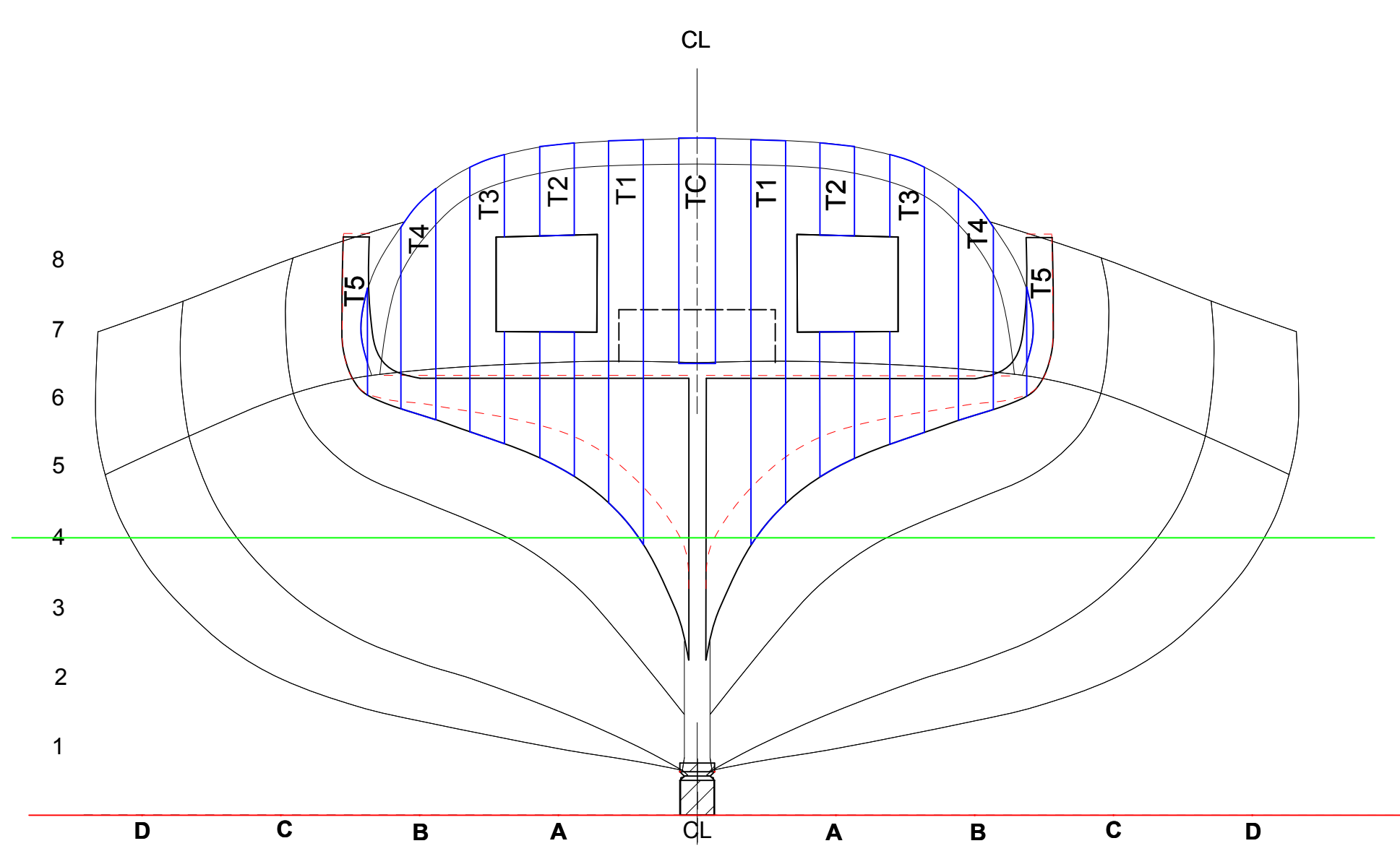
Inboard Profile



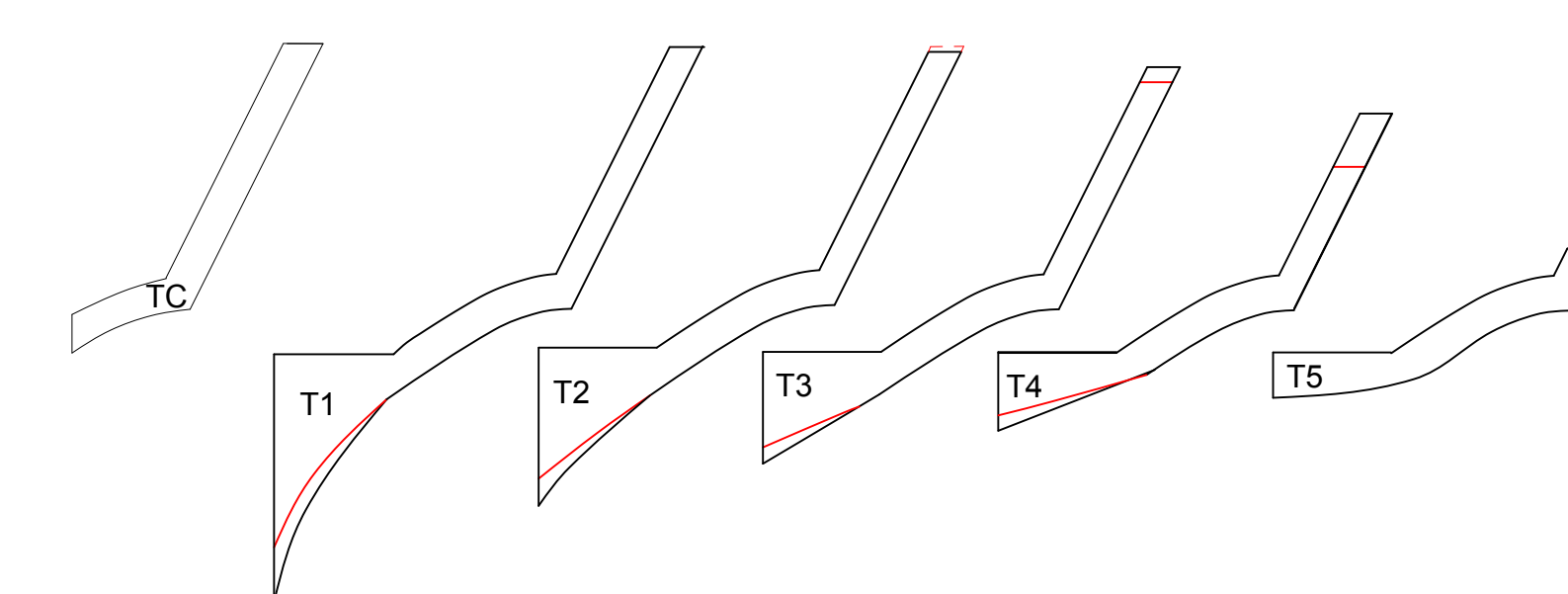
Deck Plan



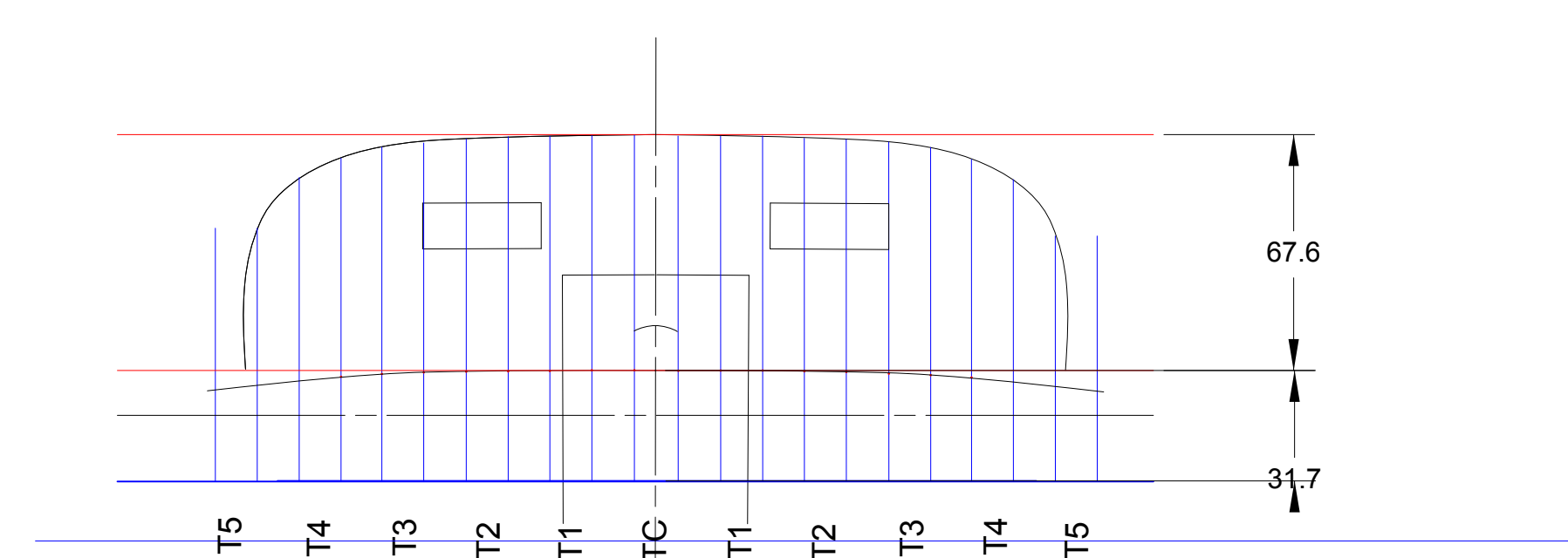
Bow Cant Frame Elevation



Counter Timber Elevation



Counter Timber Frames



Counter Timber Deck Plan